



FREE PATTERN



Estelle Woodrow Lace & Cable Hat & Scarf Set

Show off your knitting skills with this quick but interesting hat and scarf set

Difficulty Level: Intermediate

Sizes & Finished measurements:

Hat: One size, approximately 18 inches/46cm in circumference, 8 inches/20cm deep
 Scarf: One size, approximately 10 inches/26cm wide, 72 inches/182cm long

Gauge:

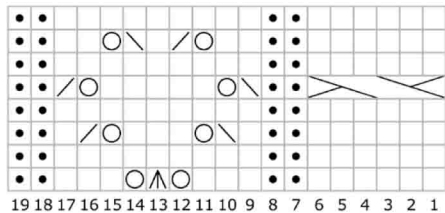
16 sts and 24 rounds = 4 inches square in stocking st on 6mm needles
 14 sts and 24 rounds = 4 inches square in lace and cable pattern on 6mm needles

Materials:

For both: 3 skeins Estelle Yarns "Woodrow" (70% superwash merino wool; 30% polyamide; 170m/100gm skein); (shown in col 02); hat uses less than 1 skein
 For Hat:
 1 16 inch 6mm circular needle
 1 set 6mm DPNs
 For Scarf:
 1 set 6.5mm needles – straight or short circular
 For Both:
 Cable needle
 Stitch marker

Chart and Stitch Glossary:

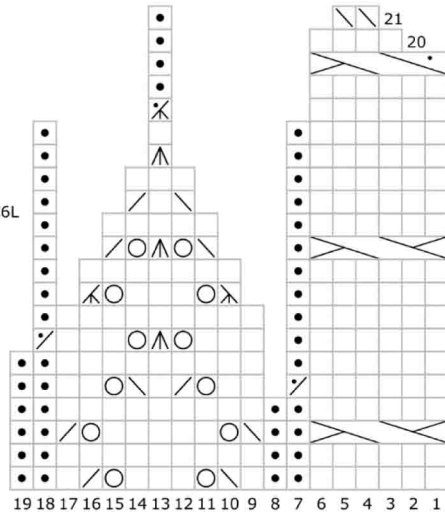
Lace and Cable Pattern



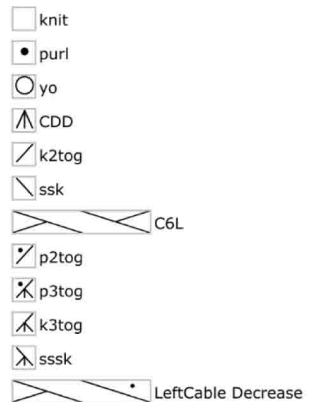
Key



Hat Decrease



Key



CDD: Slip next 2 sts together (as if to k2tog), k1, pass 2 slipped sts over.

C6L: Slip next 3 sts to cable needle and hold in front of work; k3, then k3 from cn.

Left Cable Decrease: Slip next 3 sts to cable needle and hold in front of work; k3tog, then k3 from cn.

M1: Increase one 1 by making a backwards loop and placing it on the right needle.

SSK: Slip next 2 sts, one-by-one, as if to knit; insert the tip of the left needle into the fronts of these two stitches from left to right, and knit them together.

SSSK: Slip next 3 sts, one-by-one, as if to knit; insert the tip of the left needle into the fronts of these three stitches from left to right, and knit them together.

Hat:

Using the circular needle, cast on 64 stitches. Place marker and join for working in the round, being careful not to twist.

Ribbing round: [K2, p2] around.

Work Ribbing as set for 1 inch (2.5cm).

Next round, increase for pattern: [K6, p2, (m1, k3) twice, m1, p2] four times. 76 stitches.

Next round, set pattern: Work Lace and Cable Chart 4 times around.

Work as set until 3 full repeats of the chart are complete, and work Rows 1 & 2 once more. Piece should measure about 5 1/2 inches (14 cm).

Crown Decrease:

Work Hat Decrease Chart 4 times around. Change to DPNs when hat gets too small to work on the circular needle. 12 sts rem. Cut yarn, and pull through final sts to secure. Wash and weave in ends.

Scarf:

Using larger needles, cast on 42 stitches.

Ribbing row 1 (RS): P2, [k2, p2] to end.

Ribbing row 2 (WS): K2, [p2, k2] to end.

Work Ribbing as set for 1 inch (2.5cm), ending with a RS row.

Next row, increase for pattern (WS): [K2, p2] twice, [k2, (m1, p3) twice, m1, (k2, p2) twice] twice, k2.

Next row, establish pattern (RS): P2, work chart pattern row 1 twice, and work chart pattern sts 1-8 once more.

Pattern is set. Work in pattern until scarf measures at least 60 inches (150cm) or you've almost run out of yarn, ending with chart row 1.

Decrease for ribbing (WS): [(K2, p2) twice, k2, p2tog, p1, k2tog, k1, p1, p2tog] twice, (k2, p2) twice, k2. 42 sts.

Work Ribbing as for lower edge for 1 inch (2.5cm). BO in pattern.

Cast off in pattern. Wash and weave in ends.



This is a free pattern. For more free patterns visit www.estelleyarns.com

Every effort has been made to ensure the accuracy of this pattern; however, we cannot be responsible for variance of individual knitters, human, or typographical errors.

©Estelle Designs and Sales Ltd. 2014